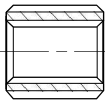


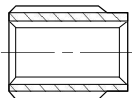


SPLINED BUSHES, SLIP SLEEVES, ADAPTORS FOR HYDRAULIC PUMP AND MOTOR DRIVES

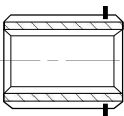
SPLINED HUBS, COUPLINGS & SHAFTS



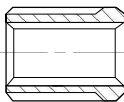
TYPE 1
PLAIN DYNAGEAR



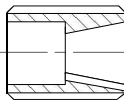
TYPE 2
EXTENDED DYNAGEAR



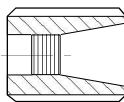
TYPE 3
SNAP RING (EUROPE)



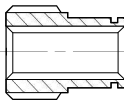
TYPE 4
FUNK GEARBOX



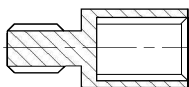
TYPE 5
DIN 1:8 TAPER WITH KEY
Has recess for nut



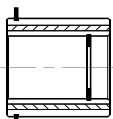
TYPE 6
DIN TAPER THREADED
CW pumps only



TYPE 7
CONQUIP FRONT PTO



TYPE 8
MALE/FEMALE



TYPE 9
TERREL DURST GEARBOX

| Type | Male Spline | Female Spline Or Round Bore | Overall Length | Part Number |
|--------------------|--------------------|-----------------------------|----------------|--------------|
| 1 | 15T 1" 16/32 | Round 5/8" keyed | 0.79" | 58/03/03988 |
| 1 | 15T 1" 16/32 | 9T 5/8" 16/32 | 0.79" | 58/03/03987 |
| 1 | 14T 1 1/4" 12/24 | 9T 5/8" 16/32 | 1.125" | 58/03/10001 |
| 1 | 14T 1 1/4" 12/24 | 13T 7/8" 16/32 | 1.125" | 58/03/10003 |
| 1 | 13T 1 3/4" 8/16 | 13T 7/8" 16/32 | 3.000" | 58/03/01899 |
| 1 | 13T 1 3/4" 8/16 | 14T 1 1/4" 12/24 | 1.200" | 58/03/20006 |
| 1 | 13T 1 3/4" 8/16 | 14T 1 1/4" 12/24 | 3.000" | 58/03/01694 |
| 1 | 13T 1 3/4" 8/16 | 21T 1 3/8" 16/32 | 1.200" | 58/03/20007 |
| 1 | 13T 1 3/4" 8/16 | 16T 35mm DIN | 1.200" | 58/03/20011 |
| 2 | 6T 1 3/4" Straight | 6T 1.0" Straight | 2.400" | 58/03/01589 |
| 2 | 13T 1 3/4" 8/16 | 9T 5/8" 16/32 | 1.375" | 58/03/20001 |
| 2 | 13T 1 3/4" 8/16 | 11T 3/4" 16/32 | 1.200" | 58/03/20002 |
| 2 | 13T 1 3/4" 8/16 | 13T 7/8" 16/32 | 1.375" | 58/03/20003 |
| 2 | 13T 1 3/4" 8/16 | 18T 25mm DIN | 1.375" | 58/03/20020 |
| 2 | 13T 1 3/4" 8/16 | 6T 1.0" Straight | 1.200" | 58/03/20005 |
| 2 | 13T 1 3/4" 8/16 | 15T 1.0" 16/32 | 1.375" | 58/03/20004 |
| 2 | 13T 1 3/4" 8/16 | 14T 30mm DIN | 1.560" | 58/03/20010 |
| 2 | 13T 1 3/4" 8/16 | Round 5/8" Keyed | 1.375" | 58/03/20012 |
| 2 | 13T 1 3/4" 8/16 | Round 1.0" Keyed | 1.375" | 58/03/20015 |
| 3 | 23T 48mm DIN | 12mm pilot bore | 35mm | 32/03/30000 |
| 3 | 13T 7/8" 16/32 | 9T 5/8" 16/32 | 1.312" | 58/03/01369 |
| 3 | 15T 1" 16/32 | 9T 5/8" 16/32 | 1.500" | 58/03/01666 |
| 3 | 14T 1 1/4" 12/24 | 11T 3/4" 16/32 | 45mm | 58/03/10002L |
| 3 | 14T 1 1/4" 12/24 | 13T 7/8" 16/32 | 1.500" | 58/03/01698 |
| 3 | 14T 1 1/4" 12/24 | 13T 7/8" 16/32 | 2.000" | 58/03/01698L |
| 3 | 14T 1 1/4" 12/24 | 15T 1.0" 16/32 | 1.500" | 58/03/00714 |
| 3 | 18T 35mm DIN | 9T 5/8" 16/32 | 1.065" | T2060038 |
| 3 | 23T 48mm DIN | 13T 7/8" 16/32 | 45mm | 32/03/30003 |
| # New !! 3# | 23T 48mm DIN | 13T 7/8" 16/32 | 45mm | 32/03/30003C |
| 3 | 23T 48mm DIN | 18T 25mm DIN | 45mm | 32/03/30020 |
| 3 | 23T 48mm DIN | 15T 1.0" 16/32 | 45mm | 32/03/30004 |
| 3 | 23T 48mm DIN | 14T 30mm DIN | 45mm | 32/03/30010 |
| 3 | 23T 48mm DIN | 14T 1 1/4" 12/24 | 45mm | 32/03/30006 |
| 3 | 23T 48mm DIN | 14T 1 1/4" 12/24 | 60mm | 32/03/30006L |
| 3 | 23T 48mm DIN | 21T 1 3/8" 16/32 | 45mm | 32/03/30007 |
| 3 | 23T 48mm DIN | 16T 35mm DIN | 45mm | 32/03/30011 |
| 3 | 23T 48mm DIN | 16T 35mm DIN | 61mm | 32/03/30011L |
| 3 | 23T 48mm DIN | 17T 1 1/2" 12/24 | 45mm | 32/03/30032 |
| 3 | 29T 62mm DIN | 13T 1 3/4" 8/16 | 55mm | 32/03/40008 |
| 3 | 29T 62mm DIN | 23T 48mm DIN | 49mm | T2062004 |
| 4 | 6T 1 3/8" Straight | 6T 1 1/8" Straight | 3.000" | 03/32/00018 |
| 4 | 13T 1 3/4" 8/16 | 13T 7/8" 16/32 | 2.000" | 028055 |
| 4 | 13T 1 3/4" 8/16 | 15T 1" 16/32 | 2.000" | 028584 |
| 4 | 13T 1 3/4" 8/16 | 14T 1 1/4" 12/24 | 2.000" | 028056 |
| 4 | 13T 1 3/4" 8/16 | 21T 1 3/8" 16/32 | 2.000" | 028271 |
| 5 | 15T 1" 16/32 | Taper DIN 2 1:8 | 0.79" | 58/03/03985 |
| 5 | 13T 1 3/4" 8/16 | Taper DIN 2 | 40mm | 58/03/20016 |
| 5 | 13T 1 3/4" 8/16 | Taper DIN 3 | 40mm | 58/03/20017 |
| 6 | 13T 7/8" 16/32 | Taper DIN 2 1:8 | 1.750" | 54/03/00164 |
| 7 | 6T 1 3/4" Straight | 6T 1.0" Straight | 1.700" | 58/03/00965 |
| 8 | 23T 48mm DIN | 13T 1 3/4" 8/16 | 90mm | 32/03/30008 |
| 9 | 13T 1 3/4" 8/16 | 9T 5/8" 16/32 | 2.000" | TS20900244 |
| 9 | 13T 1 3/4" 8/16 | 13T 7/8" 16/32 | 1.938" | TS20900245 |
| 9 | 13T 1 3/4" 8/16 | 15T 1.0" 16/32 | 1.750" | TS20900246 |
| 9 | 13T 1 3/4" 8/16 | 19T 1 1/4" 16/32 | 2.375" | TO12160131 |
| 9 | 13T 1 3/4" 8/16 | 14T 1 1/4" 12/24 | 1.750" | TS20900247 |
| 9 | 13T 1 3/4" 8/16 | 21T 1 3/8" 16/32 | 1.850" | TS12160120 |

32/03/30003C Has extra circlip and is counterbored on one end.

Most items are manufactured from alloy steel. Actual materials, finish and treatment may vary according to the origin of the part. Overall lengths may vary from that indicated depending on origin of the part. If length important check with our sales office. Other sizes may be available - consult sales office