

BG30 GR. 3

CARATTERISTICHE TECNICHE - TECHNICAL CHARACTERISTICS

Grandezza Size	Cilindrata cm ³ /giro Displacement (in ³ /rev)	Velocità max giri/min Max speed rpm	Portata max lt/min Max flow (gpm)	Velocità min giri/min Min speed rpm	Portata min lt/min Min flow (gpm)	Rendim. Vol. min* % Min Volum. Effic.* %
BG30-19	19.05 (1.22)	3500	66.7 (17.6)	700	13.3 (3.51)	95
BG30-22	22.2 (1.42)	3500	77.8 (20.5)	700	15.6 (4.12)	95
BG30-28	28.3 (1.82)	3300	93.5 (24.7)	700	19.8 (5.23)	95
BG30-33	33.2 (2.13)	3300	109.4 (28.9)	700	23.2 (6.12)	95
BG30-37	37.2 (2.38)	3300	122.6 (32.4)	700	26.0 (6.86)	95
BG30-44	43.98 (2.82)	3000	131.9 (34.8)	700	30.8 (8.13)	95
BG30-52	51.9 (3.33)	3000	155.6 (41.1)	700	36.3 (9.58)	95
BG30-61	61.4 (3.94)	2500	153.5 (40.5)	700	43.0 (11.35)	95

*Rendimento volumetrico a 1500 giri/min * Volumetric efficiency at 1500 rpm



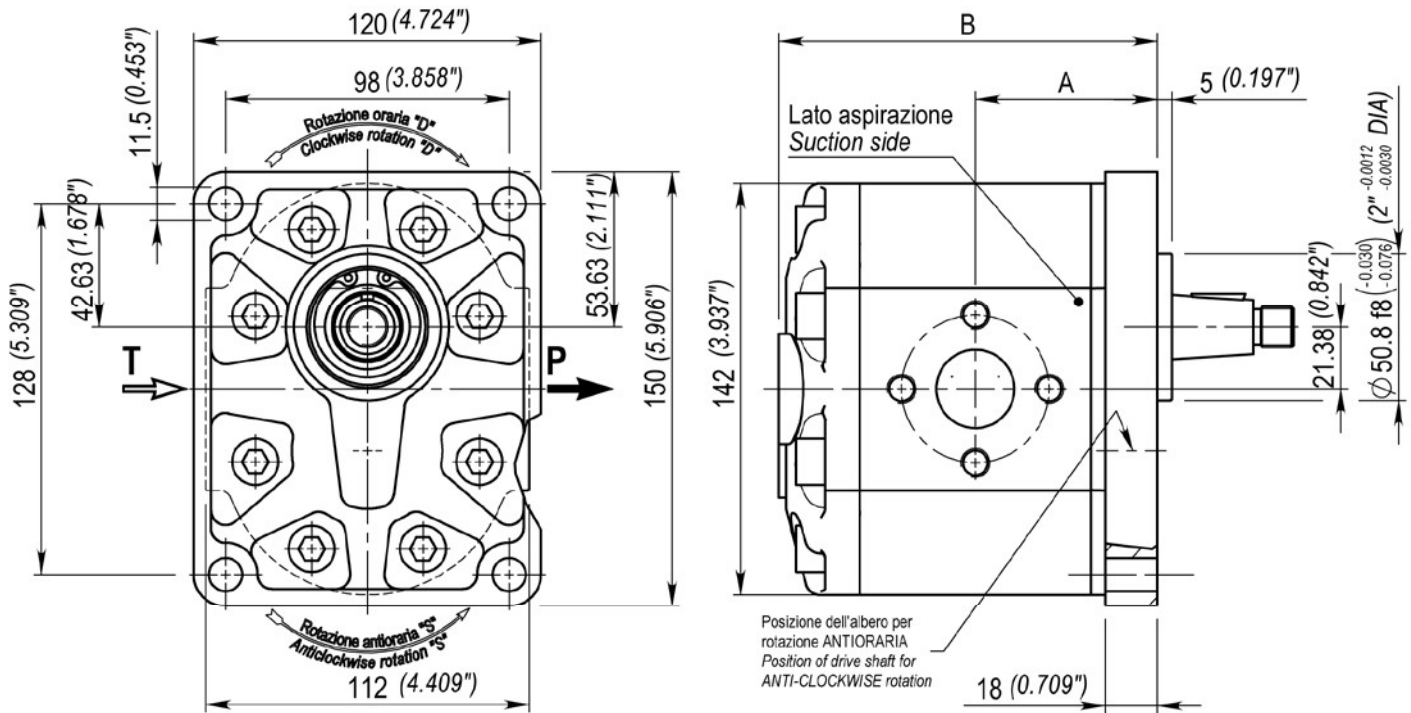
STO
Flangia standard
Standard flange



S20 / S21
Flangia Sae B / SAE B-OR
Sae B / SAE B-OR flange

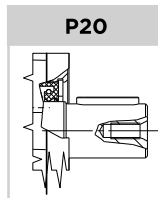
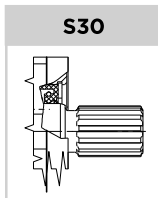
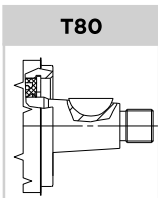
BG30 GR. 3

FLANGIA STANDARD **STO**
STANDARD FLANGE **STO**

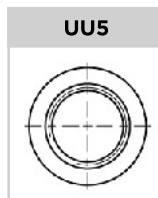
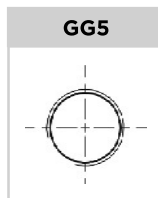
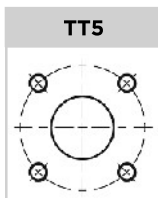
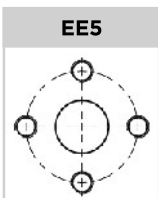


DIMENSIONI E PESI - EXTERNAL DIMENSIONS AND WEIGHTS

Grandezza Size	Cilindrata cm ³ /giro Displacement (in ³ /rev)	Pressione max di esercizio Max working pressure			Dimensioni Dimensions		Massa kg Mass (lbs)
		P1 Bar (psi)	P2 Bar (psi)	P3 Bar (psi)	A mm (in)	B mm (in)	
BG30-19	19.05 (1.22)	250 (3625)	270 (3916)	300 (4351)	62.95 (2.48)	130.9 (5.15)	4.98 (11)
BG30-22	22.2 (1.42)	240 (3481)	260 (3771)	290 (4206)	64.3 (2.53)	133.6 (5.26)	5.10 (11.3)
BG30-28	28.3 (1.82)	220 (3191)	240 (3481)	260 (3771)	66.9 (2.63)	138.8 (5.46)	5.34 (11.8)
BG30-33	33.2 (2.13)	220 (3191)	230 (3336)	260 (3771)	68.9 (2.71)	142.9 (5.63)	5.52 (12.2)
BG30-37	37.2 (2.38)	210 (3046)	230 (3336)	250 (3625)	70.6 (2.78)	146.3 (5.76)	5.68 (12.5)
BG30-44	43.98 (2.82)	200 (2901)	220 (3191)	240 (3481)	73.6 (2.90)	152.1 (5.99)	5.93 (13.1)
BG30-52	51.9 (3.33)	200 (2901)	210 (3046)	230 (3336)	76.9 (3.03)	158.8 (6.25)	6.24 (13.8)
BG30-61	61.4 (3.94)	180 (2611)	190 (2756)	200 (2901)	81 (3.19)	166.9 (6.57)	6.60 (14.6)

ALBERI CONSIGLIATI - SUGGESTED SHAFTS


Vedi dimensioni a fine sezione BG30
See dimensions at the end of section BG30

CONNESSIONI DISPONIBILI - SAVALIABLE CONNECTIONS


Vedi dimensioni a fine sezione BG30
See dimensions at the end of section BG30

"X" = numero variabile dipendente dalla cilindrata
"X" = variable number that depends on the displacement

CODICE ORDINAZIONE - ORDERING CODE

BG30	CODICE CODE	
	CILINDRATA DISPLACEMENT	19 22 28 33 37 44 52 61 19.05 22.2 28.3 33.2 37.2 43.98 51.9 61.4
	FLANGIA FLANGE	STO Standard Standard
	FLANGIA E COPERCHIO FLANGE AND COVER	A Alluminio Aluminium G Ghisa Cast iron (Heavy duty)
	ALBERO SHAFT	T80 S30 P20
	CONNESSIONE CONNECTION	EE5 TT5 GG5 UU5
	ROTAZIONE ROTATION	D Rotazione destra Clockwise rotation S Rotazione sinistra Anticlockwise rotation
	COPERCHIO STANDARD STANDARD COVER	O Standard Standard
	GUARNIZIONI SEALS	O Tenute in Nbr Nbr seals V Tenute in Viton® Viton® seals