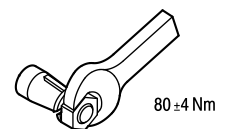
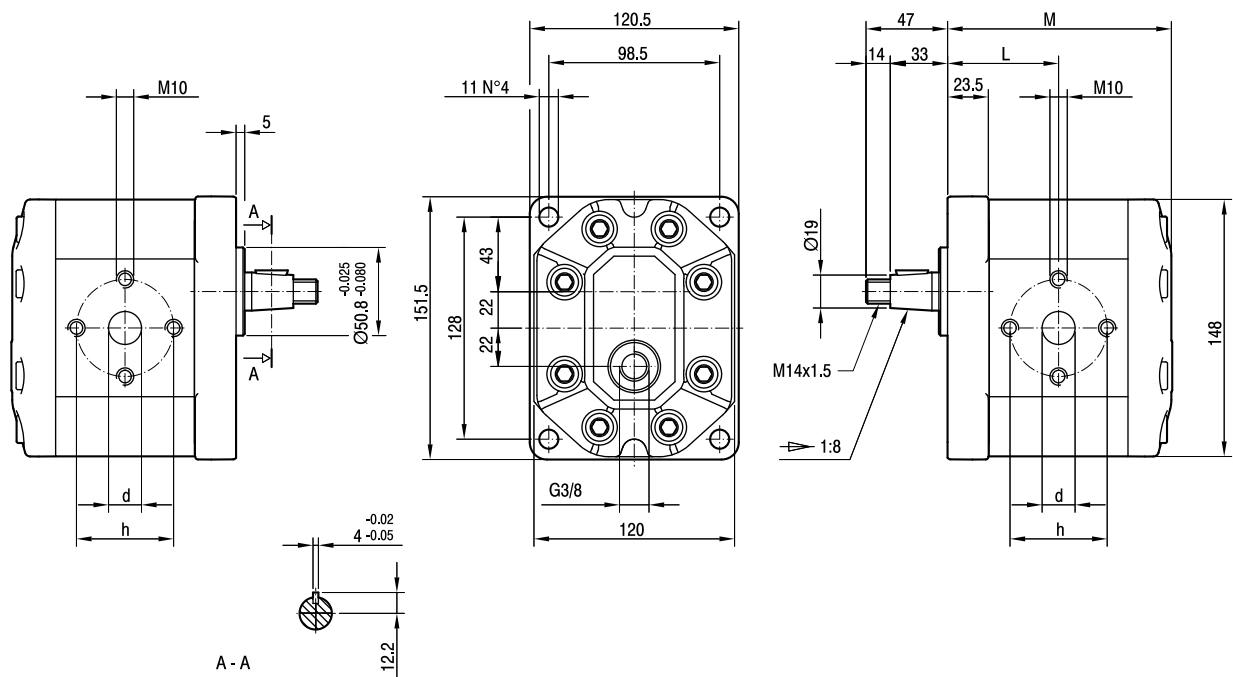


ALM3

Parti accessorie a corredo del motore standard: linguetta a disco (codice 522058), dado M14x1.5 (codice 523017), rosetta elastica spaccata (codice 523006).
 Porte standard: filetti M10 profondità utile 19 mm.
 Drenaggio G3/8 profondità utile 15 mm.

Accessories supplied with the standard motor: woodruff key (code 522058), M14x1.5 hexagonal nut (code 523017), washer (code 523006).
 Standard ports: M10 threads depth 19 mm.
 G3/8 drain port thread depth 15 mm.



TIPO TYPE	CILINDRATA DISPLACEMENT	PORTATA a 1500 giri/min FLOW at 1500 rev/min	PRESSIONI MASSIME MAX PRESSURE			VELOCITÀ MASSIMA MAX SPEED	DIMENSIONI DIMENSIONS			
			P _I	P _C	P _P		L	M	d	h
	cm ³ /giro (cm ³ /rev)	litri/min (litres/min)	bar	bar	bar	giri/min (rpm)	mm	mm	mm	mm
ALM3-R-33-E1	22	31	230	220	250	3500	64,5	130,5	27	56
ALM3-R-40-E1	26	37	230	220	250	3000	66	133,5	27	56
ALM3-R-50-E1	33	48	230	220	250	3000	68,5	138,5	27	56
ALM3-R-60-E1	39	56	220	210	240	3000	70,5	142,5	27	56
ALM3-R-66-E1	44	62	210	200	230	2800	72	145,5	27	51
ALM3-R-80-E1	52	74	200	190	215	2400	75	151,5	27	56
ALM3-R-94-E1	61	87	190	180	205	2800	78	157,5	33	62
ALM3-R-110-E1	71	101	170	160	185	2500	81,5	164,5	33	62
ALM3-R-120-E1	78	112	160	150	175	2300	84	169,5	33	62
ALM3-R-135-E1	87	124	140	130	155	2000	87	175,5	33	62