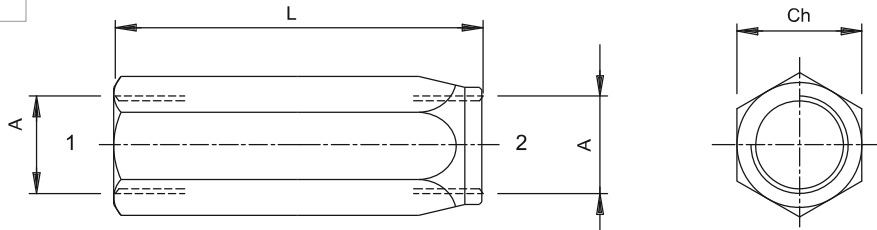
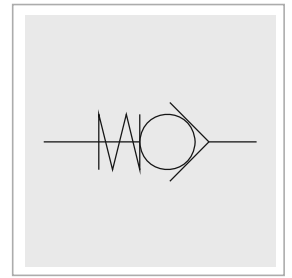


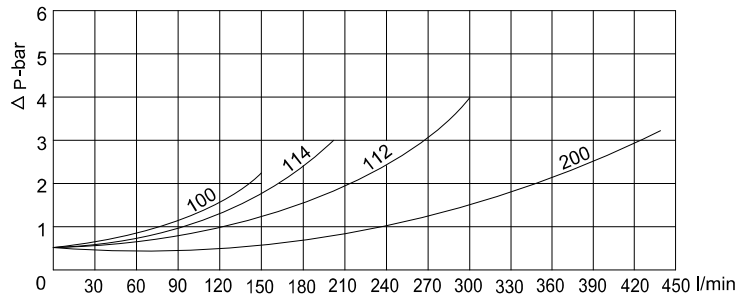
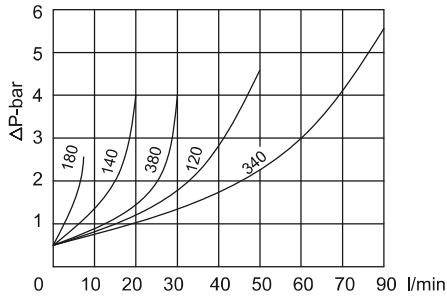


Le valvole unidirezionali VUR permettono il passaggio libero dell'olio in un senso e lo bloccano nel senso opposto.

*VUR check valves allow oil passing through one way only and stop it on the opposite way.*



Perdite di carico  
Pressure drops



Codice di ordinazione  
Ordering code

**VUR**    \*\*\*    \*\*

|            |     |                    |  |                                     |  |   |   |                                 |   |
|------------|-----|--------------------|--|-------------------------------------|--|---|---|---------------------------------|---|
| BSPP 1/8   | 180 | Dimensione<br>Size | Sfera<br>Ball  | SF                                  | *<br>Molla nera 1 bar<br>Black spring (Standard) | 1 |   |                                 |   |
| BSPP 1/4   | 140 |                    |  |                                     |  |   |   |                                 |   |
| BSPP 3/8   | 380 |                    | Otturatore<br>Poppet   | SP                                  |  |   |   |                                 |   |
| BSPP 1/2   | 120 |                    |  |                                     |  |   |   |                                 |   |
| BSPP 3/4   | 340 |                    | Solo per VUR180-VUR140-VUR380<br>Only for VUR180-VUR140-VUR380 | Molla gialla 3 bar<br>Yellow spring |  |   | 3 |                                 |   |
| BSPP 1     | 100 |                    |  |                                     |  |   |   |                                 |   |
| BSPP 1-1/4 | 114 |                    |  |                                     |  |   |   | Molla rossa 6 bar<br>Red spring | 6 |
| BSPP 1-1/2 | 112 |                    |  |                                     |  |   |   |                                 |   |
| BSPP 2     | 200 |                    |  |                                     |  |   |   |                                 |   |

Caratteristiche tecniche  
Features

| Codice Code | A          | Portata Max<br>Max flow<br>l/min | Pressione Max<br>Max pressure<br>bar | L   | Ch | Peso<br>Weight<br>Kg |
|-------------|------------|----------------------------------|--------------------------------------|-----|----|----------------------|
| VUR 180     | BSPP 1/8   | 5                                | 400                                  | 47  | 15 | 0,05                 |
| VUR 140     | BSPP 1/4   | 15                               | 350                                  | 55  | 19 | 0,10                 |
| VUR 380     | BSPP 3/8   | 30                               | 350                                  | 65  | 27 | 0,18                 |
| VUR 120     | BSPP 1/2   | 50                               | 320                                  | 75  | 27 | 0,31                 |
| VUR 340     | BSPP 3/4   | 90                               | 300                                  | 86  | 35 | 0,45                 |
| VUR 100     | BSPP 1     | 150                              | 250                                  | 110 | 41 | 0,95                 |
| VUR 114     | BSPP 1-1/4 | 200                              | 250                                  | 123 | 55 | 1,49                 |
| VUR 112     | BSPP 1-1/2 | 300                              | 210                                  | 138 | 65 | 2,40                 |
| VUR 200     | BSPP 2     | 430                              | 150                                  | 160 | 70 | 3                    |