

Model No. **M4D1**  
**M4D - 138 - 1 N 00 - B 1 02 ..**

**M4D - Series external drain**

**M4D1 Series internal drain**

**Torque**

- 062 = 1,04 Nm/bar
- 074 = 1,22 Nm/bar
- 088 = 1,45 Nm/bar
- 102 = 1,68 Nm/bar
- 113 = 1,86 Nm/bar
- 128 = 2,11 Nm/bar
- 138 = 2,30 Nm/bar

**Type of shaft**

- 1 = keyed (SAE C)
- 3 = splined (SAE C)

**Direction of rotation (shaft end view)**

N = bi-directional

**Modifications**

**Ports**

- 01 = SAE threaded port  
SAE drain
- 02 = 4 bolt SAE flange with UNC threads  
SAE drain
- M4 = 4 bolt SAE flange with Metric  
threads  
BSPP drain

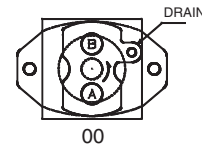
**Seal class**

- 1 = S1 - BUNA N
- 5 = S5 - VITON®

**Design letter**

**Porting combination**

00 = standard

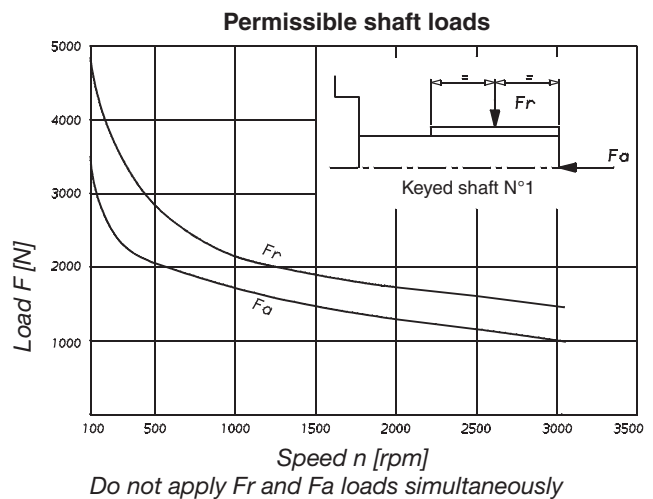
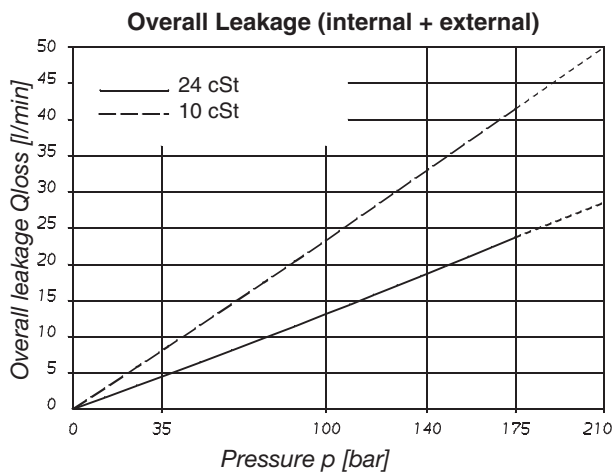


M4D1 : Drain port is plugged.

CW rotation => A = inlet B = outlet  
 CCW rotation => B = inlet A = outlet

**Operating Characteristics - Typical [24 cSt]**

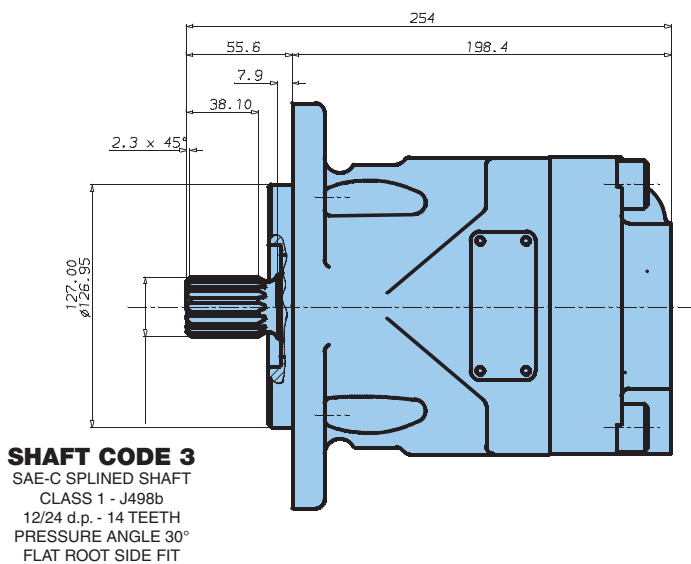
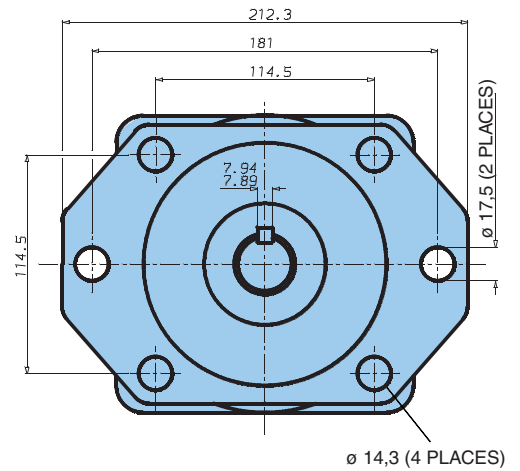
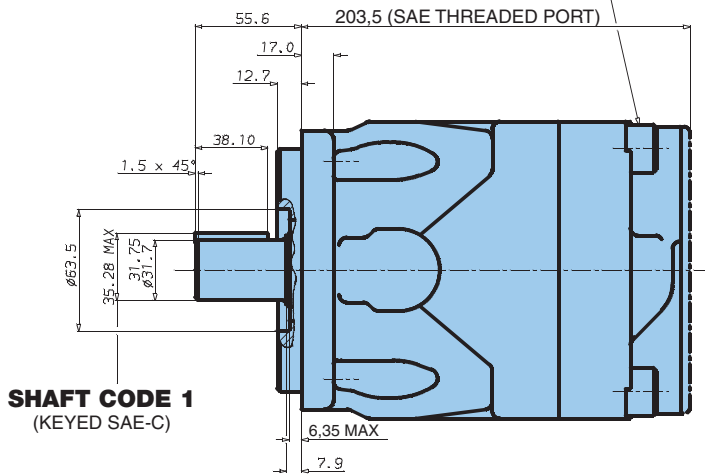
Model	V <sub>i</sub> Volumetric displacement cm <sup>3</sup> /rev.	Input flow at n = 2000 rpm		Torque T at n = 2000 rpm	Power output at n = 2000 rpm
		Theoretical	at 175 bar Δ p	at 175 bar Δ p	at 175 bar Δ p
		l/min	l/min	Nm	kW
M4D 062	65,1	130,0	154,0	165,0	34,6
M4D 074	76,8	154,0	178,0	200,0	41,9
M4D 088	91,0	182,0	206,0	236,0	49,4
M4D 102	105,5	211,0	241,0	264,0	55,3
M4D 113	116,7	233,0	257,0	300,0	62,8
M4D 128	132,4	265,0	289,0	340,0	71,2
M4D 138	144,4	289,0	313,0	372,0	77,9



**M4D - M4D1 motor**

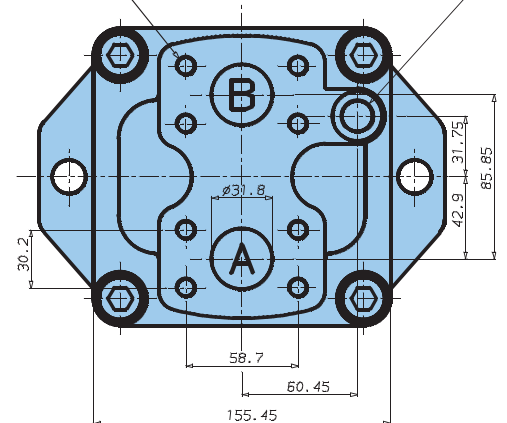
**Weight : 27,0 kg**

MOUNTING TORQUE: 180 N.m



7/16"-14 UNC x 22 DEEP - 8 HOLES  
 (M12 x 22,1 DEEP-METRIC VERSION)

DRAIN SAE 8 (3/4"-16 UNF) OR 3/8" BSPP



DRAIN SAE 8 (3/4" 16 UNF) 14,2 DEEP

SAE 20 (1" 5/8-16 UNF) x 19 DEEP-2 HOLES

